

www.yes-fastener.com
www.unifixs.com

UNI HARDWARE



Good Quality ,
Best Service,
Fix the World.

Fixings&Fasteners

Chinese Professional Fastener and Hardware Supplier



嘉兴友力金属制品有限公司
JIAXING UNI HARDWARE CO.,LTD



NEVER STOP GROWING

Create a Better Future with You



UNiFIXS, A HEAD COMPANY IN ANCHOR FIXING SYSTEM

Yes-Fastener is famous for fastener and fixing system. It was started as a fastener manufacturer which was founded in 2006 by Mr Cui.

It was a small fabrication work for major hardware corporation local in the beginning

In 2010, Yes-Fastener began to produce and market all by ourselves.

Especially in fixing system.

Metal frame anchor, sleeve anchor, wedge anchor, drop in anchor, alloy anchor, hollow wall anchor, etc.

Soon, workers in Yes-Fastener increased to 30, and have own auto fixing machines.

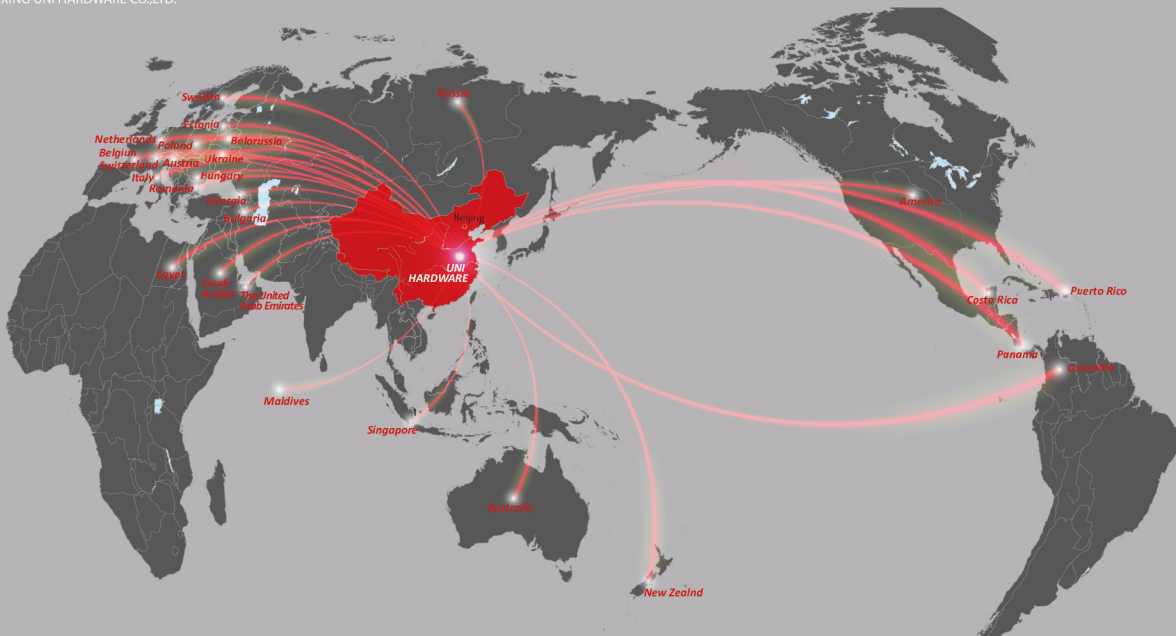
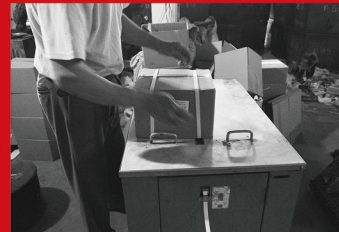
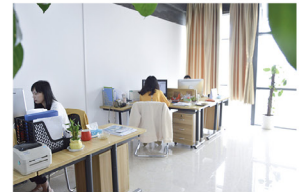
In 2016, Yes-Fastener began to develop overseas market.

Meanwhile, UNI-Hardware was born.

The business referred to Din 571, Flange bolt, Hex bolt, Carriage bolt.

Concrete screw, Thread rod, Non-Standard products. The markets expanded to Russia, Saudi Arabia, Poland, Hungary, Belgium, France, Sweden, Panama, Columbia etc

In 2017, we combined Yes-Fastener with UNI-Hardware to one brand called "unifixs". The moral is united to be the one and top of fixing system in Haiyan and around the world.





CONCRETE SCREW ANCHOR



HOLLOW WALL ANCHOR



SLEEVE ANCHOR BOLT WITH WASHER



SLEEVE ANCHOR NUT WITH FLANGE NUT



SLEEVE ANCHOR BOLT WITH HOOK



SLEEVE ANCHOR BOLT WITH EYE HOOK



SLEEVE ANCHOR WITH BOLT AND WASHER



SLEEVE ANCHOR



ZINC METAL FRAME ANCHOR



WEDGE ANCHOR



DROP IN ANCHOR



4 SHEILD ANCHOR



ONE PIECE



CEILING ANCHOR



METAL HAMMER DRIVE ANCHOR



ZINC ALLOY EASY DRIVE ANCHOR



EXTRUDED PLASTIC ANCHOR



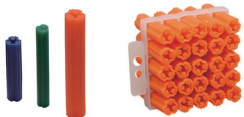
PAN HEAD HOLLOW WALL ANCHOR



EXPRESS NAILS



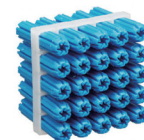
PIPE ANCHOR



TIRE WIRE ANCHOR



STRAIGHT EXTRUDED PLASTIC ANCHOR



STAR PLASTIC ANCHOR



STRAIGHT STAR PLASTIC ANCHOR



FISH PLASTIC ANCHOR



FISH PLASTIC ANCHOR



FISH PLASTIC ANCHOR



SPECIAL FISH PLASTIC ANCHOR



SPECIAL FISH PLASTIC ANCHOR



SPECIAL FISH PLASTIC ANCHOR



SPECIAL FISH PLASTIC ANCHOR



UNIVERSAL ANCHOR



DIN258



DIN7978



FRAME FIXING ANCHOR



FRAME FIXING ANCHOR



HAMMER FIXING ANACHOR



HAMMER FIXING ANACHOR



HAMMER FIXING ANACHOR



SPECIAL HAMMER
FIXING ANCHOR



SPECIAL HAMMER
FIXING ANCHOR



SPECIAL HAMMER
FIXING ANCHOR



SPECIAL HAMMER
FIXING ANCHOR



NAIL ANCHOR



NAIL ANCHOR



NAIL ANCHOR



NAIL ANCHOR



SAFETY PIN



NAIL ANCHOR



PLASTIC TOGGLE ANCHOR



PLASTIC TOGGLE ANCHOR



PLASTIC TOGGLE ANCHOR



PLASTIC TOGGLE ANCHOR



NYLON DRYWALL ANCHOR



NYLON DRYWALL ANCHOR



NYLON DRYWALL ANCHOR



NYLON DRYWALL ANCHOR



SUPER PLASTIC ANCHOR



SUPER PLASTIC ANCHOR



SUPER PLASTIC ANCHOR



SUPER PLASTIC ANCHOR



SOLID WALL ANCHOR



SOLID WALL ANCHOR



SOLID WALL ANCHOR



METAL DRYWALL ANCHOR



METAL DRYWALL ANCHOR



METAL DRYWALL ANCHOR



METAL DRYWALL ANCHOR



METAL DRYWALL ANCHOR



METAL DRYWALL ANCHOR



METAL DRYWALL ANCHOR



LAG SCREW ANCHOR



DOUBLE EXPANSION
ANCHOR



MACHINE SCREW ANCHOR



LEAD WOOD SCREW
ANCHOR



SINGLE EXPANSION
ANCHOR



SLEEVE ANCHOR



SLEEVE ANCHOR

Nuts



DIN439



DIN929



DIN934



DIN935



DIN936



DIN980-V



DIN6330



DIN6915



DIN7967



ISO4032



ISO4034



ISO4035



UNI5587



UNI5588



A563-DH



A194-2H



HEX NUT



DIN982



DIN985



DIN986



DIN1587



DIN315



DIN6923



DIN6926



DIN6927



DIN6334



DIN1624



DIN557



DIN562



DIN928



DIN582



SPRING NUT



BARREL NUT



RIVET NUT



RIVET NUT



FLAT HEAD HEX NUT

Screw



COUNTERSUNK HEAD
CONSTRUCTION SCREW



WAFER HEAD
CONSTRUCTION SCREW



CONCRETE SCREW



DIN571



CHIPBOARD SCREW



DRYWALL SCREW
TAPPING SCREW



DRYWALL SCREW
DRILLING SCREW



DIN7981C



DIN7982C



DIN7983



PAN FRAMING HEAD
TAPPING SCREW



MODIFIED TRUSS
HEAD TAPPING SCREW



DIN7504N



DIN7504P



DIN7504K



DIN7504K



DIN7504K



DIN7504K



PAN FRAMING HEAD
DRILLING SCREW



MODIFIED TRUSS HEAD
DRILLING SCREW



CONFIRMATE SCREW



CONFIRMATE SCREW



DIN84



DIN963



DIN965



DIN967



DIN7500C



DIN7985



MACHINE SCREW



EURO SCREW



DIN95



DIN96



DIN7997



ALU.BLIND RIVET



ALU.BLIND RIVET



ALU.BLIND RIVET



C SCREW



L SCREW



EYE SCREW



BOLT CONNECTOR



CONCRETE SCREW RUSPERT



DIN913



DIN914



DIN915



DIN916

Washer



DIN125A



DIN125B



DIN440R



DIN1440



DIN6916



DIN7349



DIN7989



DIN9021



BS4320B



BS4320C



BS4320G



F436



NFE25513 "M" TYPE



NFE25513 "L" TYPE



NFE25513 "Z" TYPE



USS FLAT WASHER



SAE FLAT WASHER



DIN127B



DIN137A



DIN137B



DIN6796



DIN7980



DIN2093



DIN93



DIN434



DIN436



EPDM METAL WASHER



MUD-GUARD WASHER



DIN432



DIN6797A



DIN6797J



DIN6798A

Stainless Steel



DIN933



DIN912



SPLINE BOLT



HEX WELD NUT



DIN934



DIN6923



SPRING NUT



DIN571



DIN7981



DIN7982



DIN7985



MACHINE SCREW



DIN125A



DIN127B



DIN975



TIRE WIRE ANCHOR

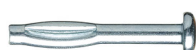


WELD STUD



SOLAR PANEL HANGER BOLT

Pin Series



SPIKE LOCKING



DIN13337



DIN8752



DIN7979



DIN1481



DIN6352



DIN94



DIN7



DIN7344



DIN7343



DIN11024



DIN2338



DIN1052



DIN258



DIN7978



DIN1434



DIN1444



DIN7346



DIN1469



DIN1475

Bolts



DIN931



DIN933



DIN960



DIN961



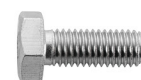
DIN6914



ASTM A325M



HEX BOLT PARTIAL THREAD



HEX BOLT FULL THREAD



DIN603



DIN607



CARRIAGE BOLT



DIN608



DIN912



DIN6921



DIN7984



DIN7991



ISO7380



UNI5933



UNI8109



EYE BOLT



DIN316



DIN580



DIN1480



HANGER BOLT



L BOLT



U BOLT



T BOLT



ASSEMBLY SCREW



DIN1474



DIN1473



DIN1476



DIN1477

PIN R TYPE



PIN R TYPE

SAFETY PIN



SAFETY PIN



SAFETY PIN



PIN D TYPE



LOCK PIN



SAETOOTH PIN
SPRING PIN



Electrical Series



JIAXING UNI HARDWARE CO.,LTD.



OVAL EYEBOLT



CURVED WASHER



SQUARE BOLT



OVAL EYE BOLT WITH
SQUARE NUT



DOUBLE ENDED THREAD
ARMING BOLT



STRAIGHT GUY BOLT ANCHOR
FORGED EYE BOLT



OVALEYE BOLT 5/8
THREAD DIAMETER



TWIN EYE ANCHOR RODS



STRUCTURE STEP BOLT



STRUCTURE STEP BOLT



SQUARE HEAD MACHINE
BOLT



WASHER HEAD STUD BOLT



TOWER BOLTS



THIMBLE EYE ANCHOR ROD
WITH NUT FOR GUYING



ROD ANCHOR THIMBLE 3/4
VARILLA DE



THREADED ROD THIMBLE
ANGLED ANCHOR ROD



MF CURVED LOCK NUTS



GUY ANCHOR ROD



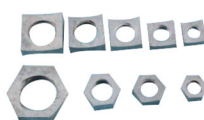
DOUBLE-ARMING BOLT
FULL THREAD



SPECIAL BOLT EYE BOLT
SQUARE HEAD BOLT



CONCAVE SQUARE LOCK NUT



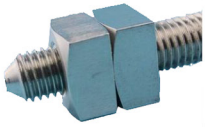
MF CURVED LOCK NUTS



IEEE STD C135.1 CARBON
STEEL 3/4" SQUARE



ASTM A153 MF CURVED
LOCK NUTS SQUARE
LOCK NUT



**POLE LINE FITTING FULL
THREAD DOUBLE-ARMING
BOLT**



**ANSI C135.80 SQUARE
CURVED WASHER**



**ASTM A 153 SQUARE
HEAD BOLT**



**SQUARE HEAD MACHINE
BOLT**



OVAL EYE BOLT



**SCREW BOLT FORGED
THIMBLE EYE BOLT**



**IEEE STD C135.1 CARBON
STEEL 3/12" SQUARE**



**ASTM A307 3/8" HEX HEAD
BOLT FOR ELECTRICAL
UTILITIES HARDWARE**



HEX HEAD BOLT WITH NUT



HEAVY HEX BOLTS STEP BOLT



**HEX HEAVY BOLT WITH
A563 NUT F436 WASHER**



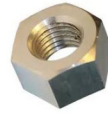
SPRING CLIP WASHER



**ASTM A 153 DOUBLE
ARMING BOLT**



**ASTM A153 CARBON STEEL
HDG 1/2" MF LOCK NUTS**



**HIGH STRENGTH CARBON
STEEL HEX NUT**



**HOT SELLING STAINLESS
STEEL SQUARE NUT**



**CARBON STEEL ROUND
HEAD CARRIAGE BOLTS**



**DOUBLE COIL HELICAL
SPRING LOCK WASHER**



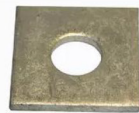
**POLELINE HARDWARE
CARBON STEEL**



**ASTM A394 TYPE O
TOWER BOLT**



**HOT DIP GALVANIZED SAE
ROUND FLAT**



**GALVANIZED STEEL
SQUARE FLAT WASHER**



**FULL THREAD GALVANIZED
STEEL DOUBLE ARMING BOLT**



**CAST SQUARE CURVED
WASHER FOR POLE LINE
ACCESSORIES**



**NO WRENCH SCREW GROUND
ANCHOR FOR POLE**



**HDG ASTM A325 HEX BOLT
1" X 16" W/A563 NUT**



WIRE HOLDER DRIVE RINGS



**STEEL DRIVE HOOK HOT
DIP GALVANIZED TO MEET
ASTM SPECIFICATION A153**



**GALVANIZED CARBON
STEEL P HOUSE HOOK
AND DRIVE HOOK**



**POWERLINE HARDWARE
STRAIGHT FORGED**



ANSI C135.5 OVAL EYE BOLT



**CARBON STEEL COACH
SCREW WOOD SCREW**



**HDG SQUARE BOLT
WITH NUT**



**PILOT POINT DRIVE HOOK
HOT DIP GALVANIZED**



C45 PLUG-IN NEEDLE



WATER-PROOF COPPER LUG



GTL BIMETAL CONNECTORS



SHACKLES



CABLE CLIPS



BALL EYES

Rivert Series



UNI 001



UNI 002



UNI 003



UNI 004



UNI 005



UNI 006



UNI 007



UNI 008



UNI 009



UNI 010



UNI 011



UNI 012



UNI 013



UNI 014



UNI 015



UNI 016



UNI 017



UNI 018



UNI 019



UNI 020



UNI 021



UNI 022



UNI 023



UNI 024



UNI 025



UNI 026



UNI 027



UNI 028



UNI 029



UNI 030



UNI 031



UNI 032



UNI 033



UNI 034



UNI 035



UNI 036



Uni Hardware is Your Best Choice!

www.yes-fastener.com www.unifixs.com

JIAXING UNI HARDWARE CO.,LTD.

TEL: +86-573-86888700

FAX: 0086-573-86888700 0086-573-86887558

Email: sales@yes-fastener.com sales@unifixs.com

Address: Julong Bridge Yongfu Community, Yuantong Street,
Haiyan, Zhejiang 314317